



FMVRSMLP

Satellite-Managed Asset -Ready Tracker

- Operates on external line power from 10 to 48 volts DC
- Accepts serial signals (TTL) from external inputs



FMVRSMLP

Satellite-Managed Asset -Ready Tracker

Designed for the intelligent management of powered and non-powered fixed and mobile assets, the FMVRSMLP LP (line-powered) is a practical solution for tracking asset location, reporting unauthorized movement, engine runtime reporting and major fault monitoring as well as a multitude of other applications. Track intermediate bulk containers, vehicles and boats as a solution to improve your assets operating efficiency and security.

The FMVRSMLP LP can be line-powered (operates on external power) or in the absence, interruption or failure of line-power, the FMVRSMLP LP will automatically switch to battery back-up to ensure transmissions continue. When using line-power, the user has maximum flexibility in messaging frequency allowing for regular monitoring of asset location.

The FMVRSMLP LP utilizes motion sensors, comparative GPS positions and custom configured sensors to gather and transmit asset status information. Each FMVRSMLP LP is configured to track its asset's specific needs and provide intermediate and emergency alerts by email or text (VAR software integration required).

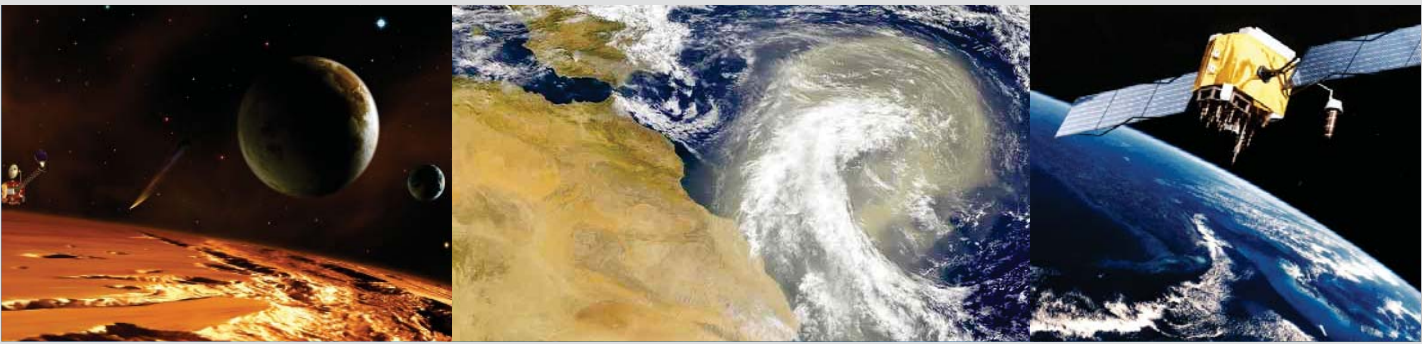


FEATURES

- Quick installation: Use industrial adhesives, brackets or screw mounts for installation
- Simple packaging: Requires no harnesses, external power or external antenna
- Automatic alerts: Change of location sensing sends alerts if asset moves outside of pre-determined range
- Messaging cost reduction mode: Reduced satellite messaging if asset remains in same location for a pre-determined period of time
- Hardware on/off feature: Allows the unit to initiate GPS re-centering functionality
- Accepts serial signals (TTL) from external inputs

BENEFITS

- Operates on external line power from 10 to 48 volts DC
- "Asset-ready" design: Allows for easy installation and field management without the need for antennas or external power
- Standard Messaging includes: Wake, GPS locate, transmit location, resume sleep and additional 12 programmable sleep and time-of-wake settings
- Messaging Cost Reduction Feature: Reduces satellite messaging if asset remains in same location or cannot obtain a GPS fix (indoors)



Configuration Software:

- Software configuration tool easily installs on PCs

FMVRSMLP LP Setup Includes:

- Up to 12 different reporting times
- Interval or 24 hour operation mode
- Alternate reporting scheduling
- Low battery message
- Motion Sensor/Vibration parameter and scheduling
- Contact closure parameters
- Diagnostic message

Operating Specifications

Dimensions	3.25"H x 6.5"W x 1.0" D
Weight	13.5oz/385g (with 4 batteries and mounting hardware)
Operating Temperature	-30° to +60° C Note: The unit shall remain operational over the -40° to +85°C range, though may experience battery life and RF signal degradation
Line Power	Up to 48 volts DC
Battery Type	4 AA 1.5V lithium Provides 3+ years of battery life Removes the need to purchase expensive proprietary batteries for replacement
Certifications	UI913 and CSA C22.2 No. 157 Certified Intrinsically Safe use in Class I, Division 1 Groups A, B, C, D environments for use US and Canada ANATEL Certification for Brazil (pending) FCC CFR Parts 15 and 25 Industry Canada CE Mark (European Certification) COFETEL
Standards	SAE J1455 MIL STD 810 NEMA 4X/IP68 RoHS Compliant
Satellite Technology	Virtualreality LEO Satellite operation using the virtualreality Simplex Data Network

Feature Set

STANDARD MESSAGING

- Wake, GPS locate, transmit location, resume sleep
- Up to 12 programmable sleep time of wake settings

ALTERNATIVE REPORTING:

- Alternate supervisory reporting schedule triggered by alarm or motion
- Transmits GPS location on alternate interval for programmed time or while alarm remains active

INTEGRATED VIBRATION SENSOR:

- Message on start and stop
- Engage interval override on motion for set time or while in motion
- Integrated Motion (Vibration) Sensor sends messages on start and stop motion event

MESSAGING COST REDUCTION:

- Reduced satellite messaging if asset remains in same location or cannot obtain a GPS fix (indoors)

CHANGE OF LOCATION:

- Theft recovery reporting based on distance moved
- Reduced messaging mode

SERIAL COMMUNICATION CAPABILITY

- User defined messages
- Serial (TTL) I/O capability to interface with remote passive and smart sensors and deliver user defined messages

Accessories

- USB Configuration Cable
- Combined Serial, LP, I/O Cable



AUSTRALIA

4/50 Jersey Street,
Jolimont, WA 6014.
Australia
Tel: +61 (08) 93837833
Fax: +61 (08) 93837933
Mobile: +61 (0) 432510332
Skype: mohit.khanna.neltronics
Web: www.fleetminder.com.au
www.neltronics.com.au

AMERICA

16192 Coastal Highway,
Lewes DE 19958,
United States of America
Tel: +1 (631) 6892728
Fax: +1 (631) 6751800

HONGKONG

Unit 16, 11/F Block A ,
Hoi Luen Industrial Centre,
55 Hoi Yuen Road,
Kwun Tong, Kowloon,
HONG KONG
Tel: 852 2172 4060
Fax: 852 8148 0111 / 2172 4070

INDIA

40H, Jacaranda Marg,
DLF Phase II,
Gurgaon, Haryana-122002,
India.
Tel: +911244080472
Fax: +911244059362
Mobile: +919810046301 /
+919818776331

www.virtualrealityinfosystems.com

www.fleetminder.com.au

